

1. Easy Sign up Process

Signing for Azure's Free Trial was pretty easy. With few clicks my Azure account was completed and confirmed via the Mobile text message verification process.

The screenshot shows the Microsoft Azure sign-up process. On the left is a blue sidebar with the text "Sign up" and a "Learn more" link. The main content area is titled "Microsoft Azure" and is divided into three numbered steps:

- 1 About you**: This step contains a form with the following fields:
 - FIRST NAME: Ado
 - LAST NAME: Trakic
 - COUNTRY/REGION: United States
 - CONTACT EMAIL: [Redacted]
 - COMPANY/SCHOOL: - Optional -
 - WORK PHONE: [Redacted]
- 2 Mobile verification**: This step contains a form with the following fields:
 - Verification method: Call me (selected), Send text message
 - Country: United States (+1)
 - Phone number: [Redacted]
 - Verification code: 492892
 - Buttons: "Call me" and "Verify code"
- 3 Agreement**: This step is partially visible at the bottom of the form.

Once account was created, signing to [Azure portal](#) was easy.

The screenshot shows the Microsoft Azure portal dashboard. The top navigation bar includes "Microsoft Azure" and "CREDIT STATUS". The left sidebar lists various services: WEB APPS, VIRTUAL MACHINES, MOBILE SERVICES, CLOUD SERVICES, SQL DATABASES, STORAGE, HDINSIGHT, MEDIA SERVICES, SERVICE BUS, VISUAL STUDIO ONLINE, CACHE, BIZTALK SERVICES, RECOVERY SERVICES, CDN, and AUTOMATION. The main content area is titled "all items" and displays a table with the following data:

NAME	TYPE	STATUS	SUBSCRIPTION
Default Directory	Directory	Active	Shared by all Default Dir

2. Register DNS Server and Define Virtual Networks

VIRTUAL NETWORKS LOCAL NETWORKS DNS SERVERS

You have not registered a DNS server. To get started, register a REGISTER A DNS SERVER

NEW

- VIRTUAL NETWORK
- TRAFFIC MANAGER
- QUICK CREATE
- CUSTOM CREATE
- IMPORT CONFIGURATION
- REGISTER DNS SERVER
- ADD LOCAL NETWORK

NAME

DNS SERVER IP ADDRESS
10.0.0.4

REGISTER DNS SERVER

networks

VIRTUAL NETWORKS LOCAL NETWORKS DNS SERVERS

NAME	STATUS	SUBSCRIPTION	LOCATION
	✓ Created		East US

2. Configure Windows Server Active Directory in a Windows Azure VM

Provisioned a new Windows Azure VM to run a Windows Server Active Directory domain controller in a new Active Directory forest by performing the following steps:

CREATE A VIRTUAL MACHINE

Virtual machine configuration

VERSION RELEASE DATE ?

4/17/2015

VIRTUAL MACHINE NAME ?

[Redacted]

TIER

BASIC STANDARD

SIZE ?

A1 (1 core, 1.75 GB memory)

NEW USER NAME

[Redacted]

NEW PASSWORD

[Redacted]

CONFIRM

[Redacted]

- ALL ITEMS
- WEB APPS 0
- VIRTUAL MACHINES 1
- MOBILE SERVICES 0
- CLOUD SERVICES 1

virtual machines

INSTANCES IMAGES DISKS

NAME	STATUS	SUBSCRIPTION	LOCATION	DNS NAME
[Redacted]	Starting	[Redacted]	East US	[Redacted]

Note: Virtual machine provisioning took more than 5 minutes. Seeing it in “running” made me happy!

virtual machines

INSTANCES IMAGES DISKS

NAME	STATUS
[Redacted]	Running

3. Attach an empty disk to Virtual Machine

Attach an empty disk to the virtual machine

VIRTUAL MACHINE NAME

STORAGE LOCATION

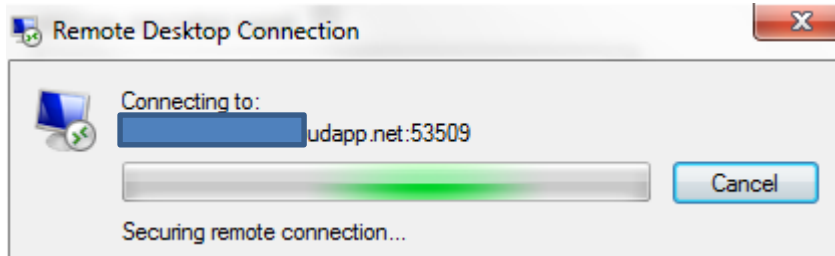
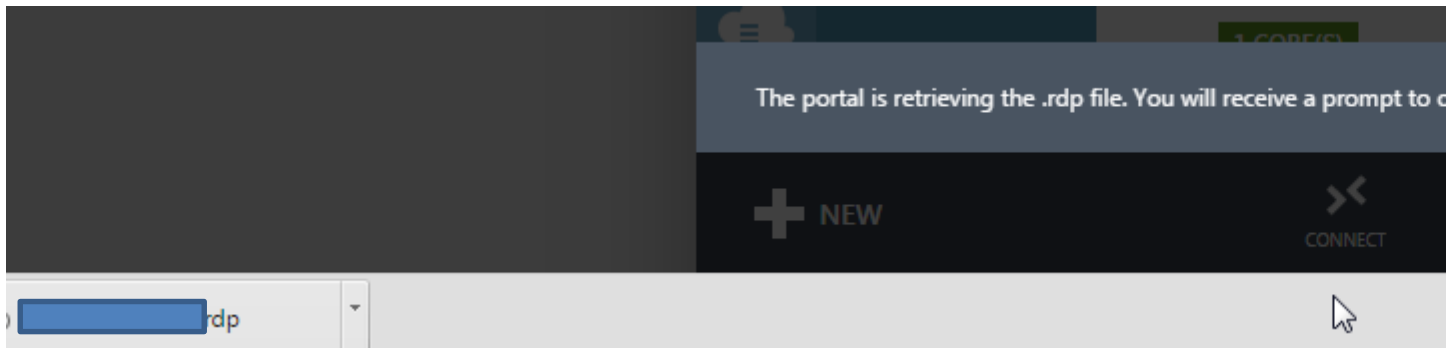
FILE NAME

SIZE (GB)

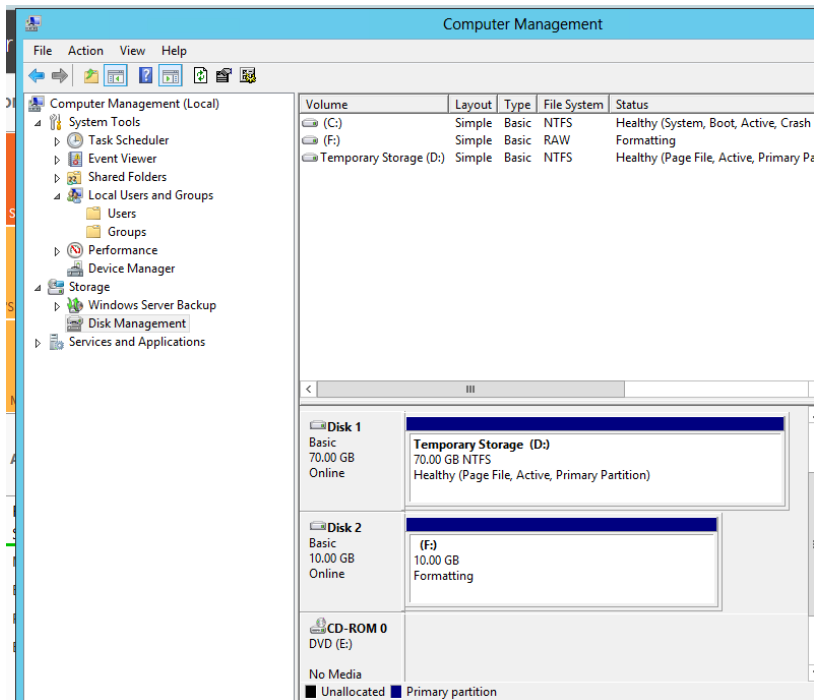
HOST CACHE PREFERENCE
 NONE READ ONLY READ/WRITE ?



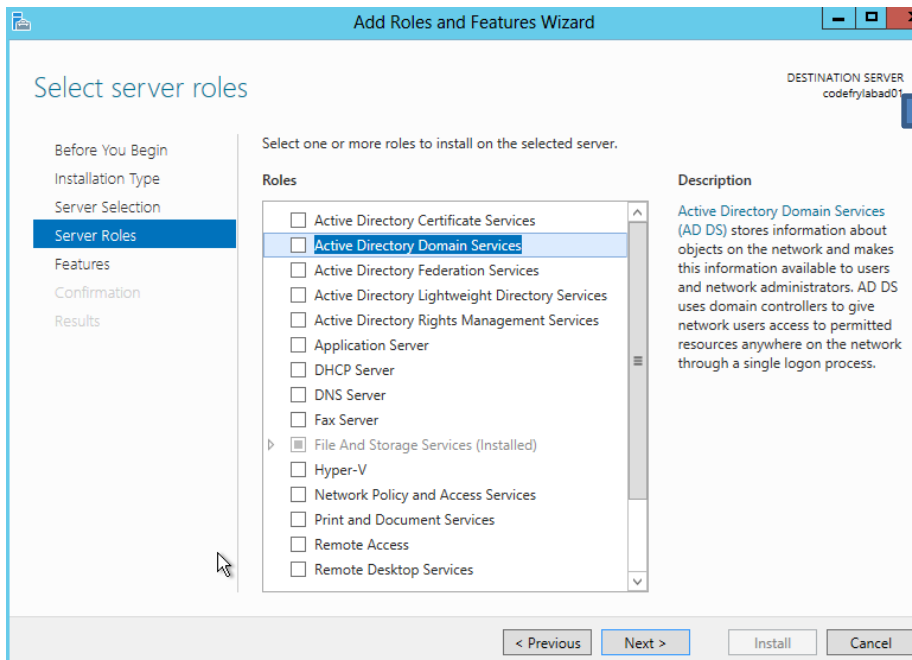
4. Download RDP file and connect to a VM remotely

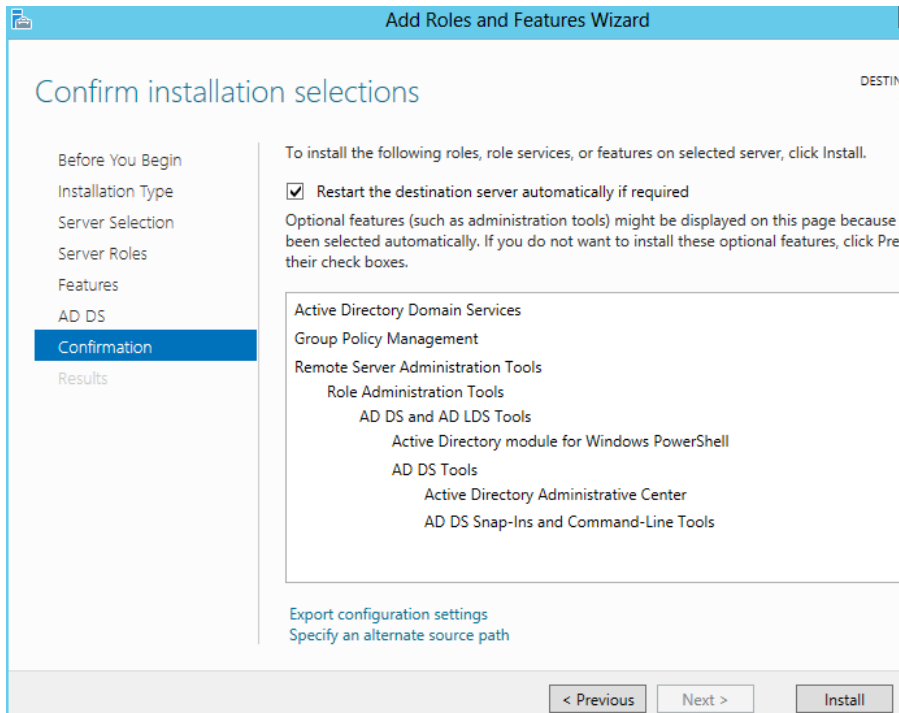


5. Create new drive partition on Windows 2012 Server



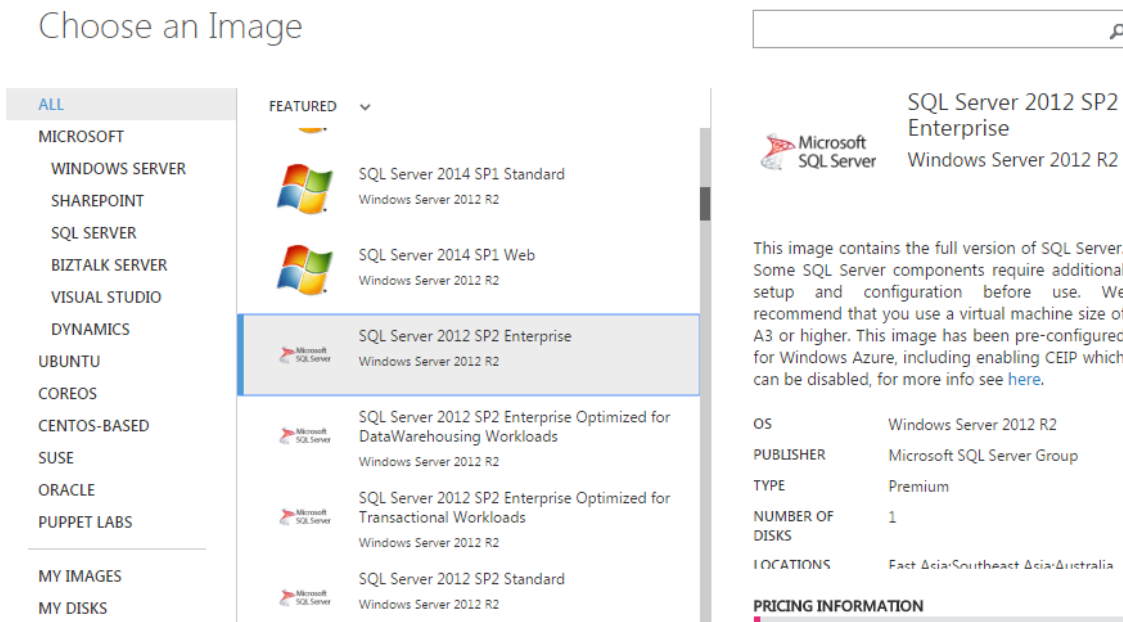
6. Using the Server Manager tool, install Active Directory Domain Services and promote this server to a domain controller in a new forest





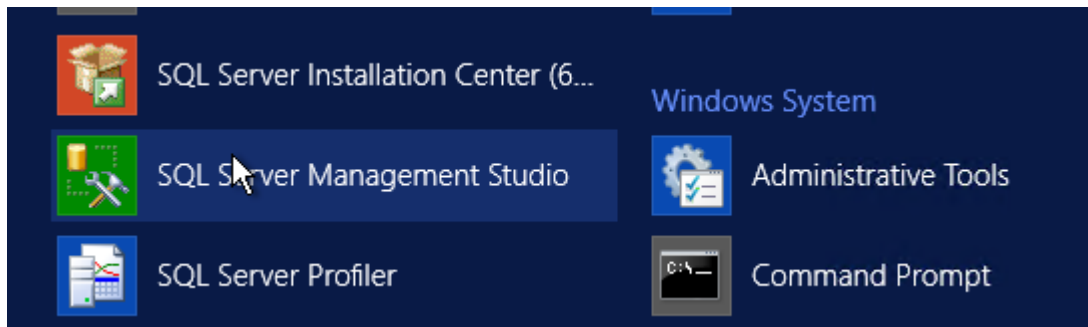
7. After Active Directory has been installed, create the user accounts that will be used when installing and configuring SharePoint Server 2013

8. Configure SQL Server 2012 in a Windows Azure VM

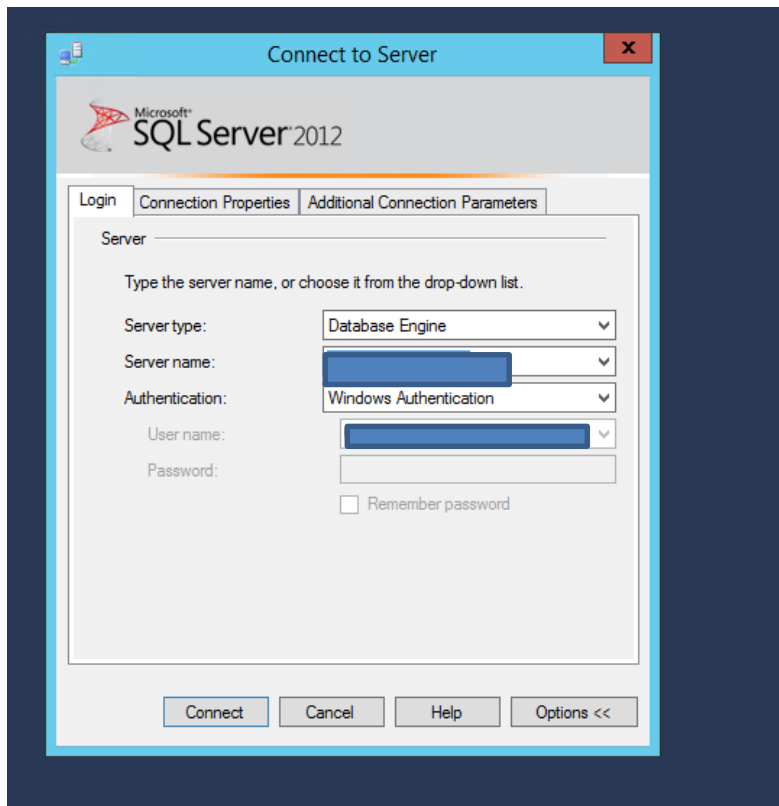


9. Create new partitions, format drive, and attach empty 50GB disk on a newly created SQL Server 2012 VM.

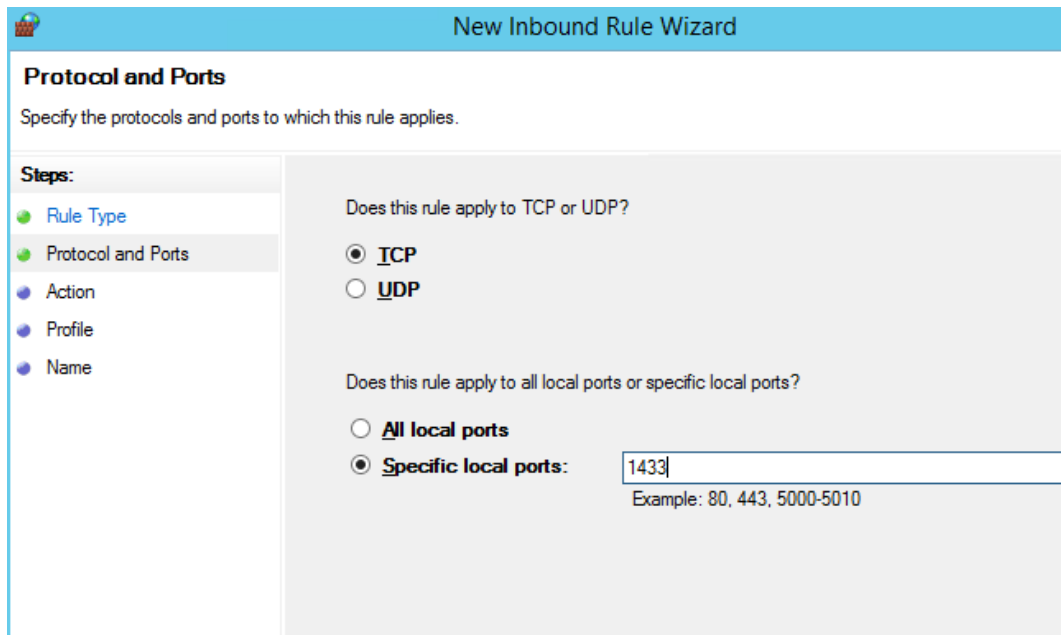
10. Open SQL Server Management Studio and update default folder locations to the F: volume.



11. Configure SQL Server 2012 connection parameters



12. Configure new inbound rules and enable 1433 TCP port



New Inbound Rule Wizard

Protocol and Ports
Specify the protocols and ports to which this rule applies.

Steps:

- Rule Type
- Protocol and Ports**
- Action
- Profile
- Name

Does this rule apply to TCP or UDP?

TCP

UDP

Does this rule apply to all local ports or specific local ports?

All local ports

Specific local ports:

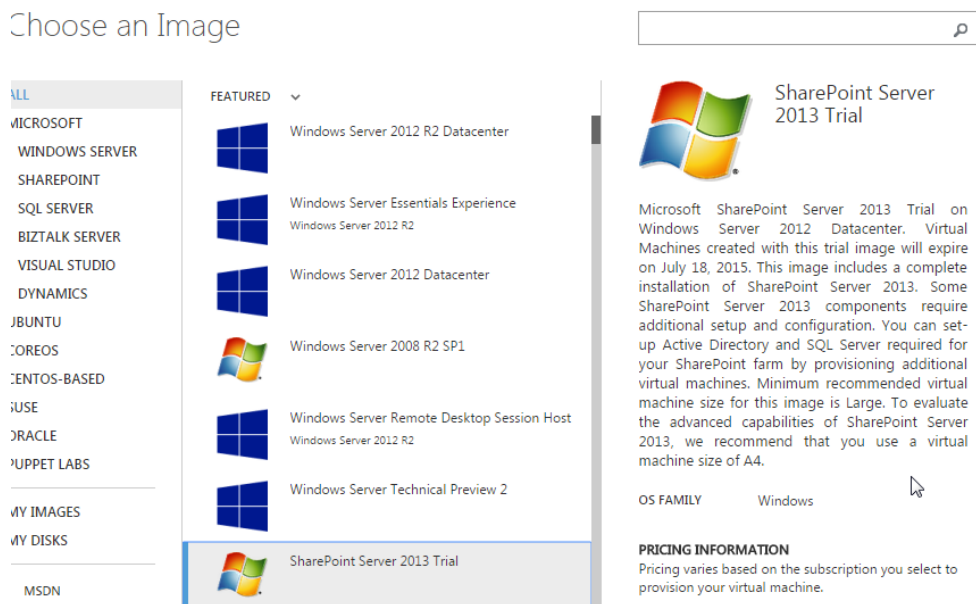
Example: 80, 443, 5000-5010

12. Using the Server Manager tool, join this server to the domain and restart the server to complete the domain join operation

13. Create and configure SharePoint Server 2013 in a Windows Azure VM

CREATE A VIRTUAL MACHINE

Choose an Image



SEARCH

ALL

- MICROSOFT
- WINDOWS SERVER
- SHAREPOINT
- SQL SERVER
- BIZTALK SERVER
- VISUAL STUDIO
- DYNAMICS
- JBUNTU
- OREOS
- ENTOS-BASED
- IUSE
- RACLE
- UPPET LABS
- MY IMAGES
- MY DISKS
- MSDN

FEATURED

- Windows Server 2012 R2 Datacenter
- Windows Server Essentials Experience
Windows Server 2012 R2
- Windows Server 2012 Datacenter
- Windows Server 2008 R2 SP1
- Windows Server Remote Desktop Session Host
Windows Server 2012 R2
- Windows Server Technical Preview 2
- SharePoint Server 2013 Trial**

SharePoint Server 2013 Trial

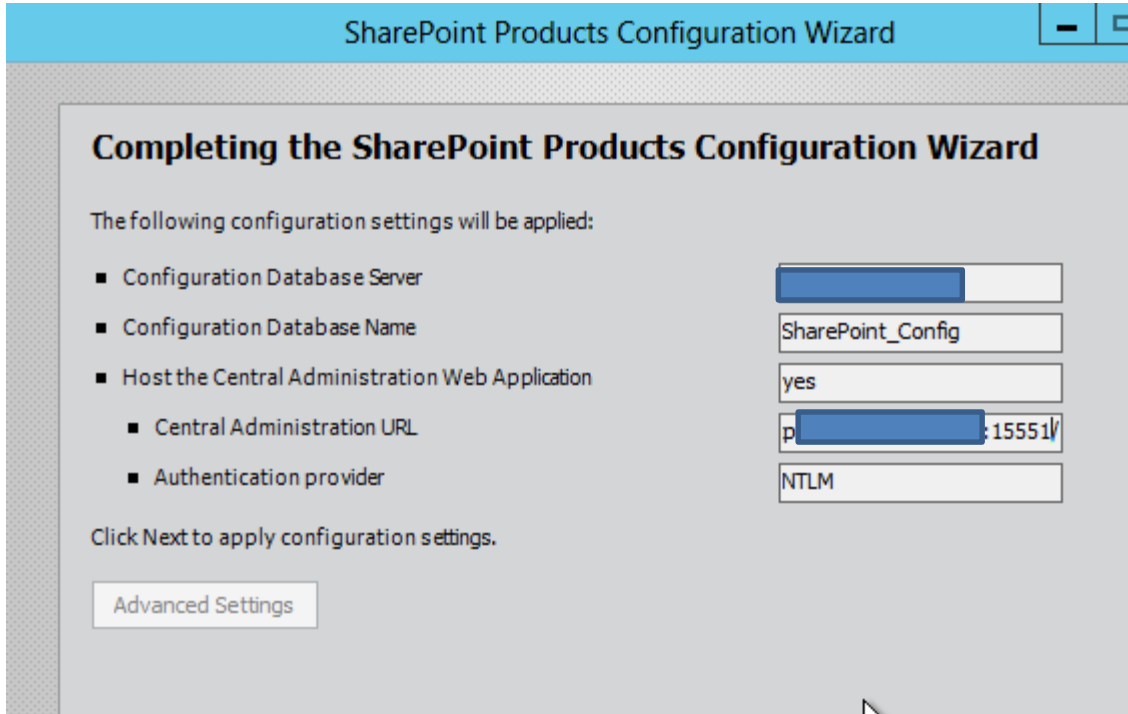
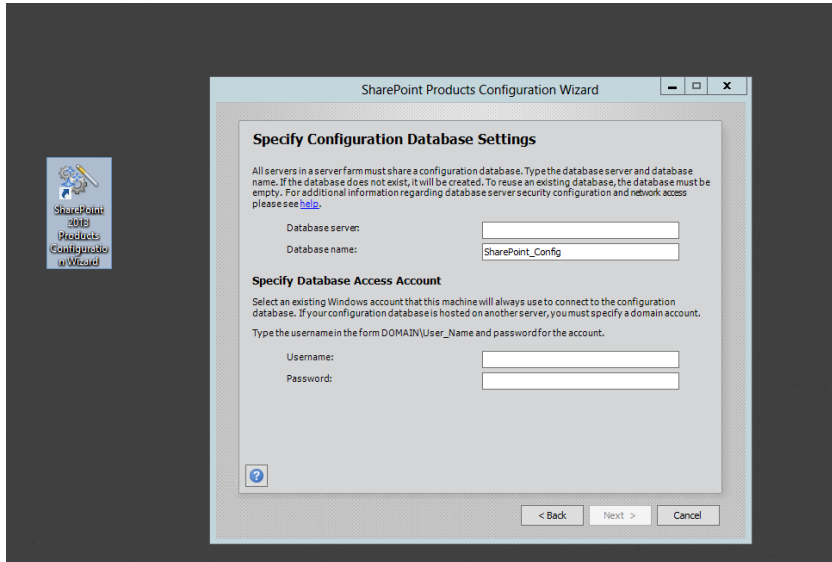
Microsoft SharePoint Server 2013 Trial on Windows Server 2012 Datacenter. Virtual Machines created with this trial image will expire on July 18, 2015. This image includes a complete installation of SharePoint Server 2013. Some SharePoint Server 2013 components require additional setup and configuration. You can set up Active Directory and SQL Server required for your SharePoint farm by provisioning additional virtual machines. Minimum recommended virtual machine size for this image is Large. To evaluate the advanced capabilities of SharePoint Server 2013, we recommend that you use a virtual machine size of A4.

OS FAMILY: Windows

PRICING INFORMATION
Pricing varies based on the subscription you select to provision your virtual machine.

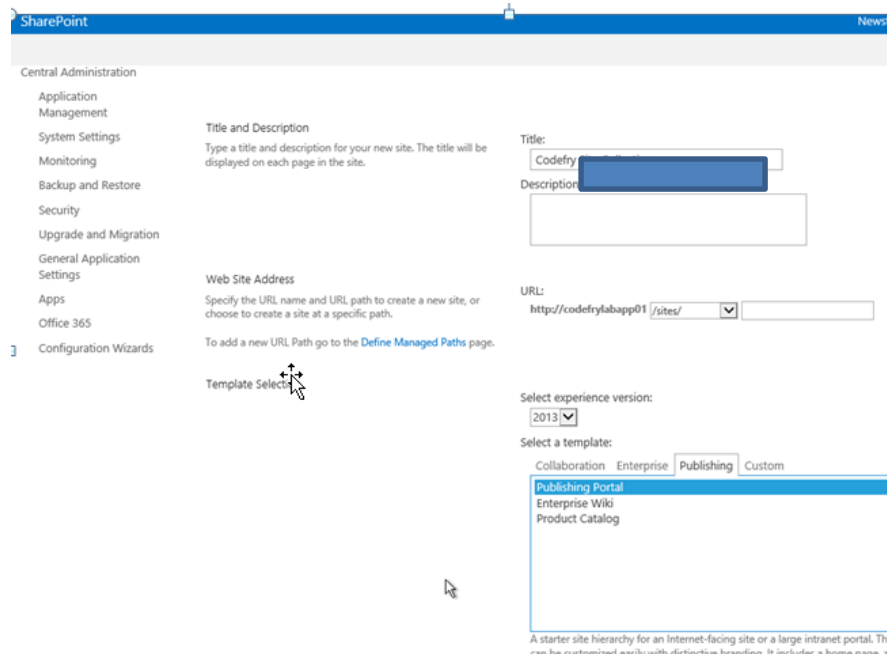
14. Confirm ip address and get connected to a VM via the RDP connection. Join server to the domain.

15. Configure SharePoint 2013 Farm

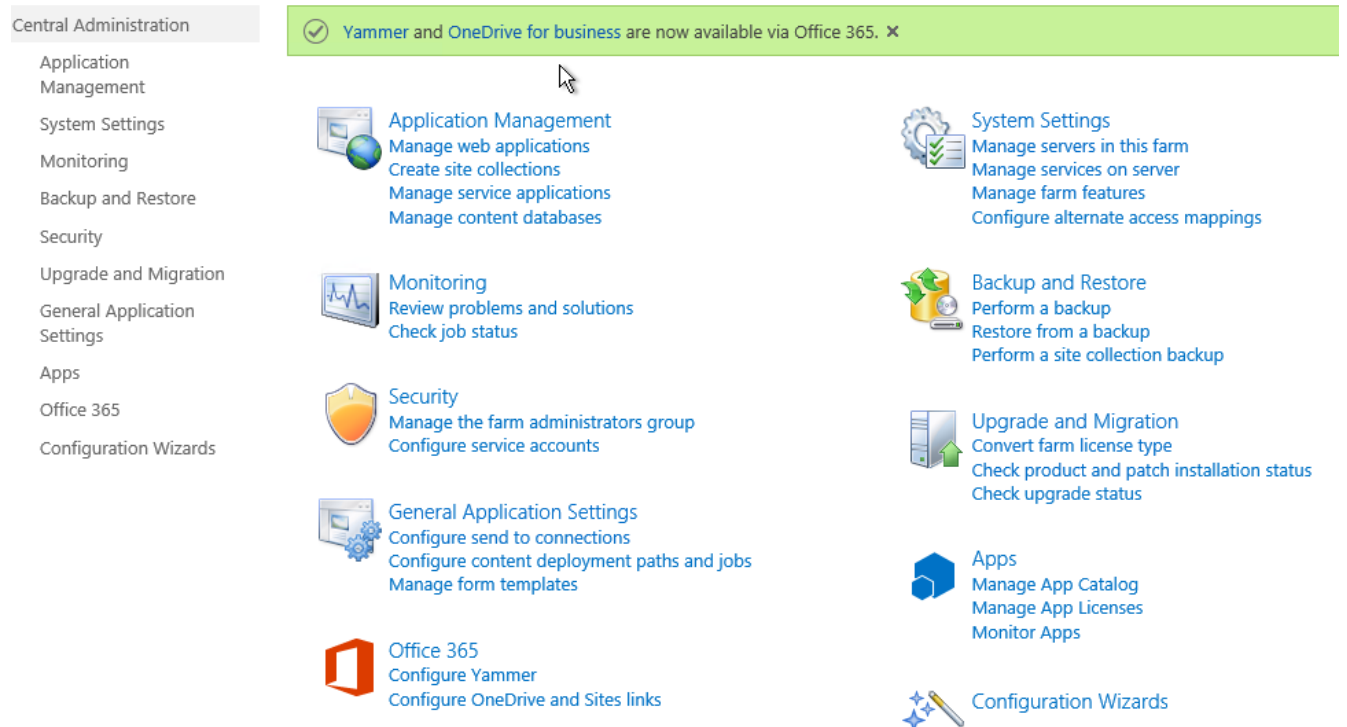


Note: creation of SharePoint configuration DB took over 15 minutes.

15. Create SharePoint 2013 Site Collection



16. Start SharePoint 2013 Central Administration and add application endpoints



16. Create sample page and enable anonymous access in SharePoint 2013

17. Configure and publish SharePoint 2013 page that can be publicly accessible

